

CR-D1-V2-PX-BK

RFID, QR code code readers, iBeacon transmitter, 4" graphical touch display



Model number:	CR-D1-B	Black
Mounting:	Field, on wall	
Old code:	CR-D1	

Features

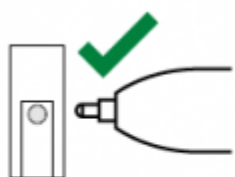
- touch display 4"
- RFID card reader
- QR code reader
- iBeacon transmitter
- digital output for door lock
- digital input for door sensor
- digital input for PIR sensor

Technical specification

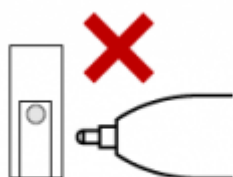
RFID reader	
Tag frequency	125kHz + 13.56MHz
Reading distance	0..4cm
Output format	32-bit binary
QR reader	
2D formats	QR code, Micro QR

Reading distance	5..30cm
Environment light	100 lux min.
Decoding time	400ms
Optimal QR size	22x22mm
Output format	plain text
iBeacon	
Bluetooth protocol	BLE 5.0
Frequency band	2.4GHz
Broadcast range	5m
Advertising interval	100..500ms
Local name	CYBRO
Touch display	
Diagonal Resolution	10cm (4")
Resolution	480×480 TFT
Touch panel	capacitive
Interface	RS485 115200 8n1
Digital input	
Input type	dry contact, internal pull-up 12V 2mA
Cable length	50m
Door lock output	
Voltage	12V or 24V, software adjustable
Output current	500mA
Protection	short circuit, overvoltage, overheating
Cable length	50m
PIR sensor	
Input type	dry contact, internal pull-up 12V 2mA
Power output	12V 25mA or 24V 25mA
Protection	short circuit, overheating
Cable length	50m
General	
Power supply	24V (18..28V), 85mA (+door lock)
Terminals	push-button cage clamp 3.5mm
Wire diameter	solid wire 0.25..1.5mm ² , stranded with ferrule 0.5..0.75mm ²
Operating conditions	0..45°C, 0..85% rh non-condensing
Operating conditions	0..45°C, 0..85% rh non-condensing
Degree of protection	IP20
Dimensions	146x240x13mm
Weight	340g (D1), 140g (D3)

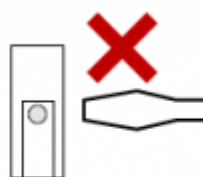
Terminals



use ball-point pen,
press the recess



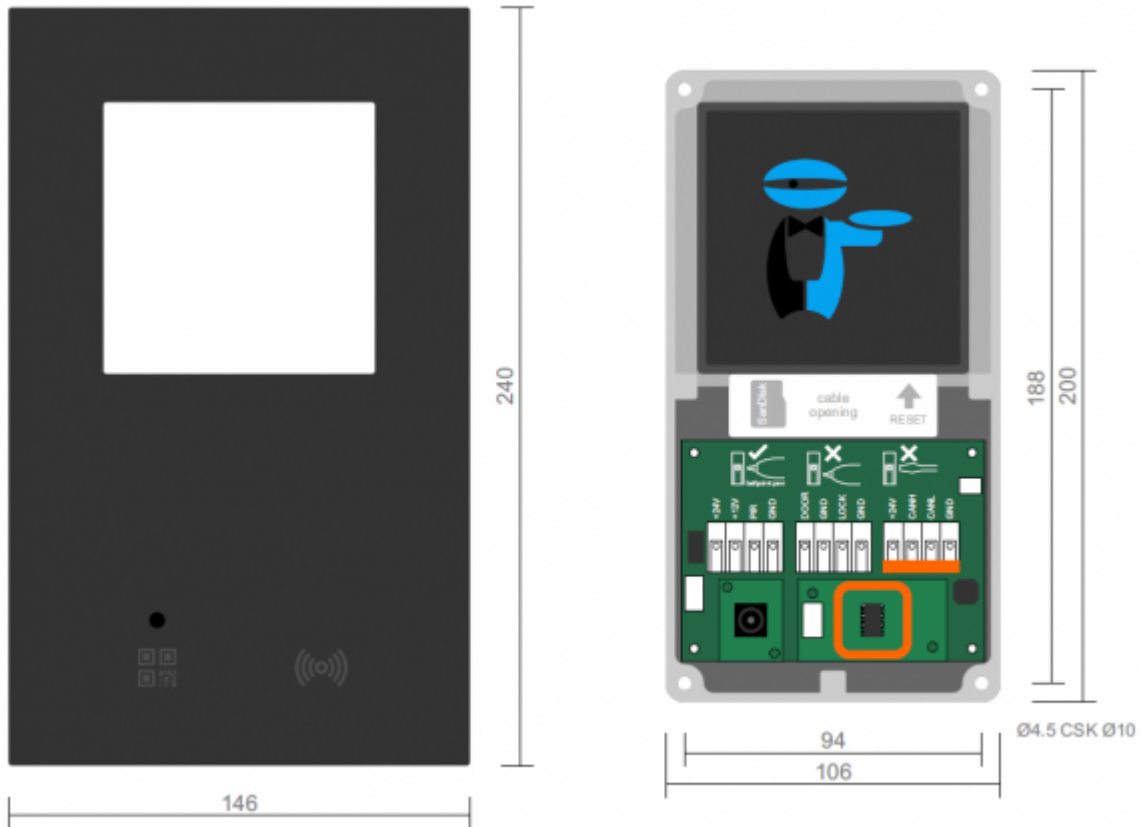
do not press in the
middle of the lever



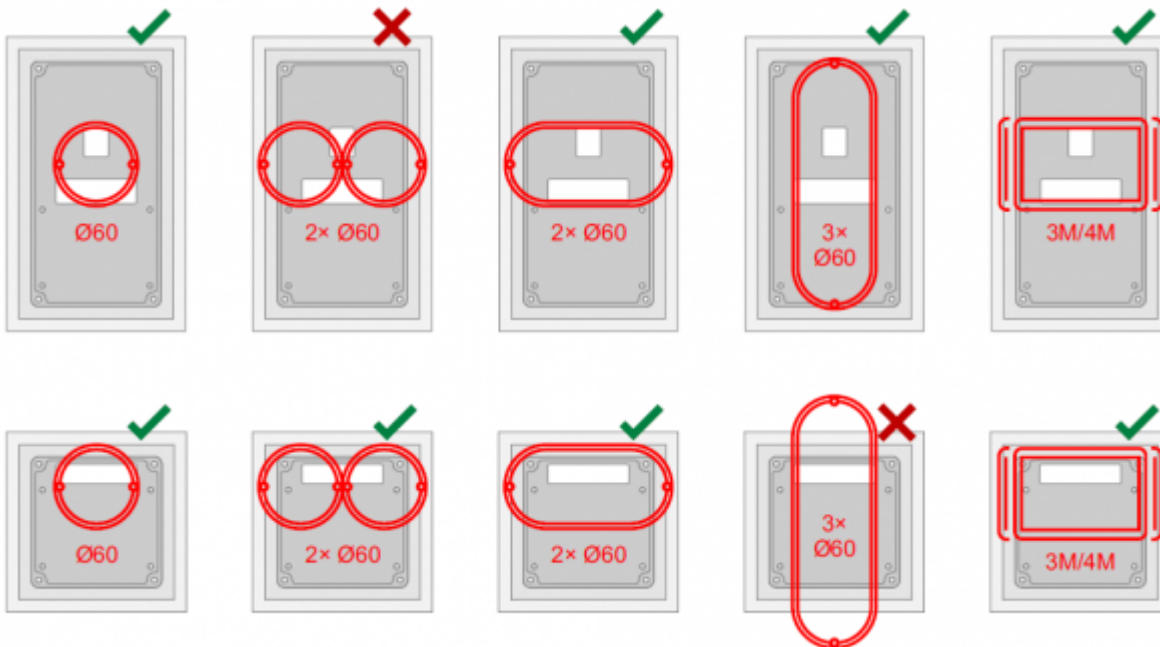
do not use
screwdriver

Dimensions & Mounting

Mounting



Fixed using four 4.5mm countersunk screws.
 Front plate dimensions depend on the model.
 Compatible with a wide range of flush boxes.



TGP app

[CR-D TGP communication & application](#)