

# CR-D1-V2-PX-BK

RFID, QR code code readers, iBeacon transmitter, 4" graphical touch display



Model number:	<b>CR-D1-B</b>	Black
Mounting:	Field, on wall	
Old code:	CR-D1	

## Features

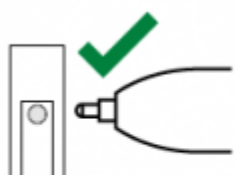
- touch display 4"
- RFID card reader
- QR code reader
- iBeacon transmitter
- digital output for door lock
- digital input for door sensor
- digital input for PIR sensor
- 2 spare digital inputs

## Technical specification

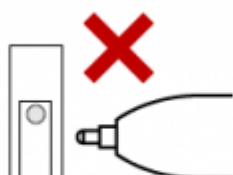
RFID reader	
Tag frequency	125kHz + 13.56MHz
Reading distance	0..4cm
Output format	32-bit binary
QR reader	
2D formats	QR code, Micro QR

Reading distance	5..30cm
Environment light	100 lux min.
Decoding time	400ms
Optimal QR size	22x22mm
Output format	plain text
<b>iBeacon</b>	
Bluetooth protocol	BLE 5.0
Frequency band	2.4GHz
Broadcast range	5m
Advertising interval	100..500ms
Local name	CYBRO
<b>Touch display</b>	
Diagonal Resolution	10cm (4")
Resolution	480×480 TFT
Touch panel	capacitive
Interface	RS485 115200 8n1
<b>Digital input</b>	
Input type	dry contact, internal pull-up 12V 2mA
Cable length	50m
<b>Door lock output</b>	
Voltage	12V or 24V, software adjustable
Output current	500mA
Protection	short circuit, overvoltage, overheating
Cable length	50m
<b>PIR sensor</b>	
Input type	dry contact, internal pull-up 12V 2mA
Power output	12V 25mA or 24V 25mA
Protection	short circuit, overheating
Cable length	50m
<b>General</b>	
Power supply	24V (18..28V), 85mA (+door lock)
Terminals	push-button cage clamp 3.5mm
Wire diameter	solid wire 0.25..1.5mm <sup>2</sup> , stranded with ferrule 0.5..0.75mm <sup>2</sup>
Operating conditions	0..45°C, 0..85% rh non-condensing
Operating conditions	0..45°C, 0..85% rh non-condensing
Degree of protection	IP20
Dimensions	146x240x13mm
Weight	340g (D1), 140g (D3)

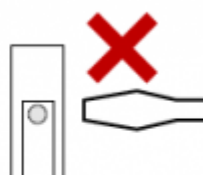
## Terminals



use ball-point pen,  
press the recess



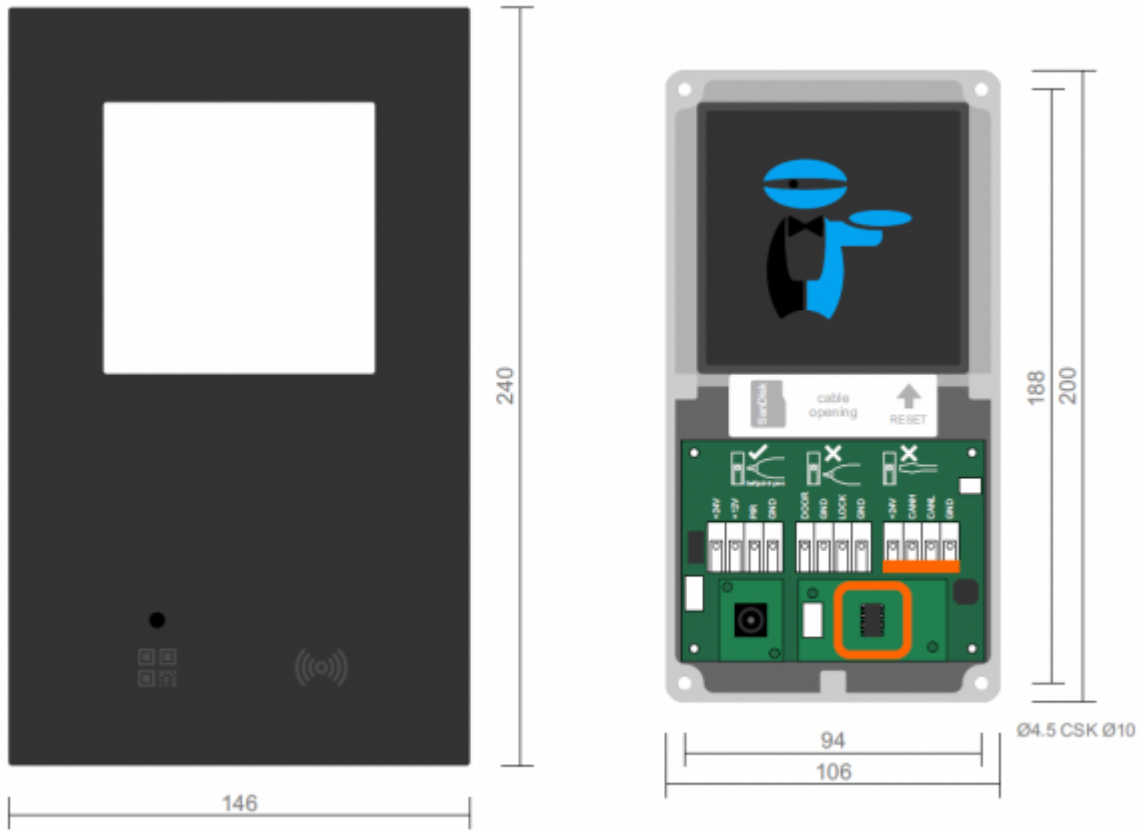
do not press in the  
middle of the lever



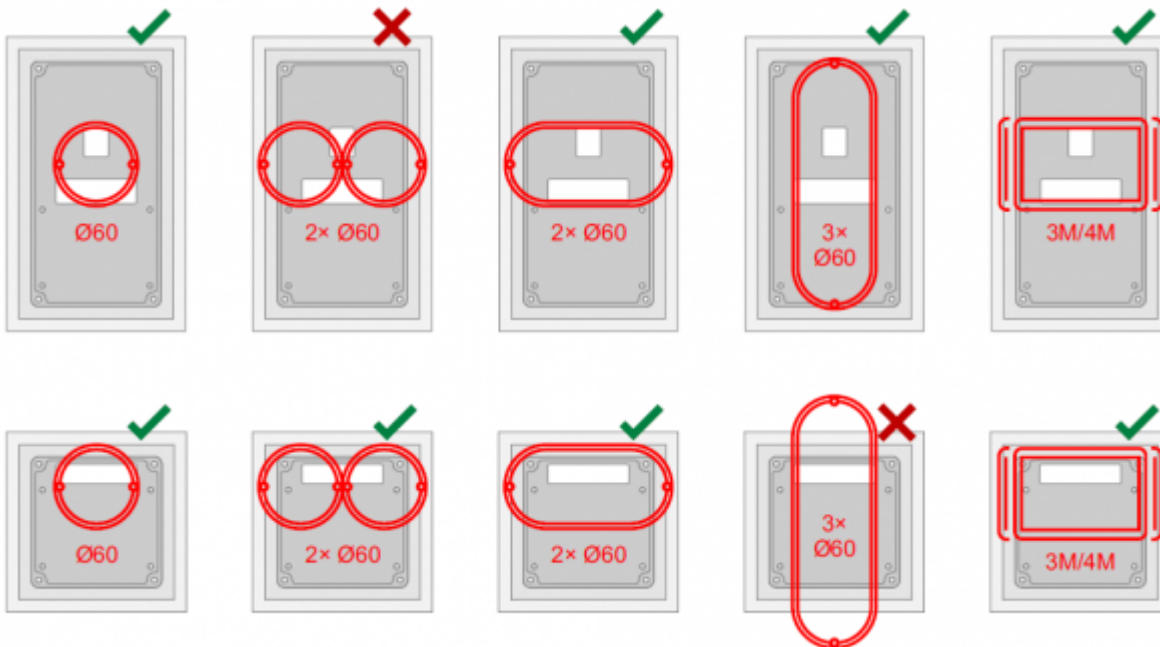
do not use  
screwdriver

## Dimensions & Mounting

## Mounting



Fixed using four 4.5mm countersunk screws.  
 Front plate dimensions depend on the model.  
 Compatible with a wide range of flush boxes.



## TGP app

[CR-D TGP communication & application](#)