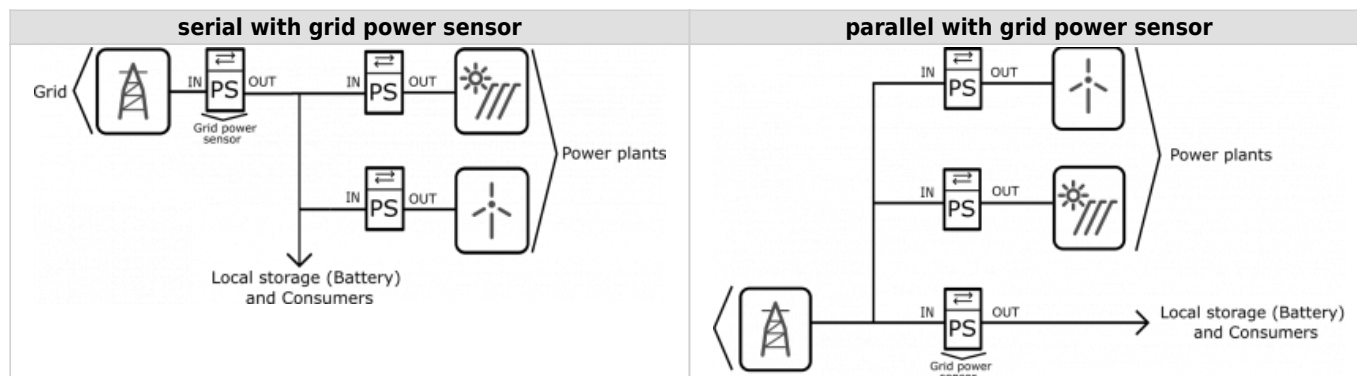


Power plant connection

The power plants can be connected to the grid in two ways:



When configuring the power plant, select

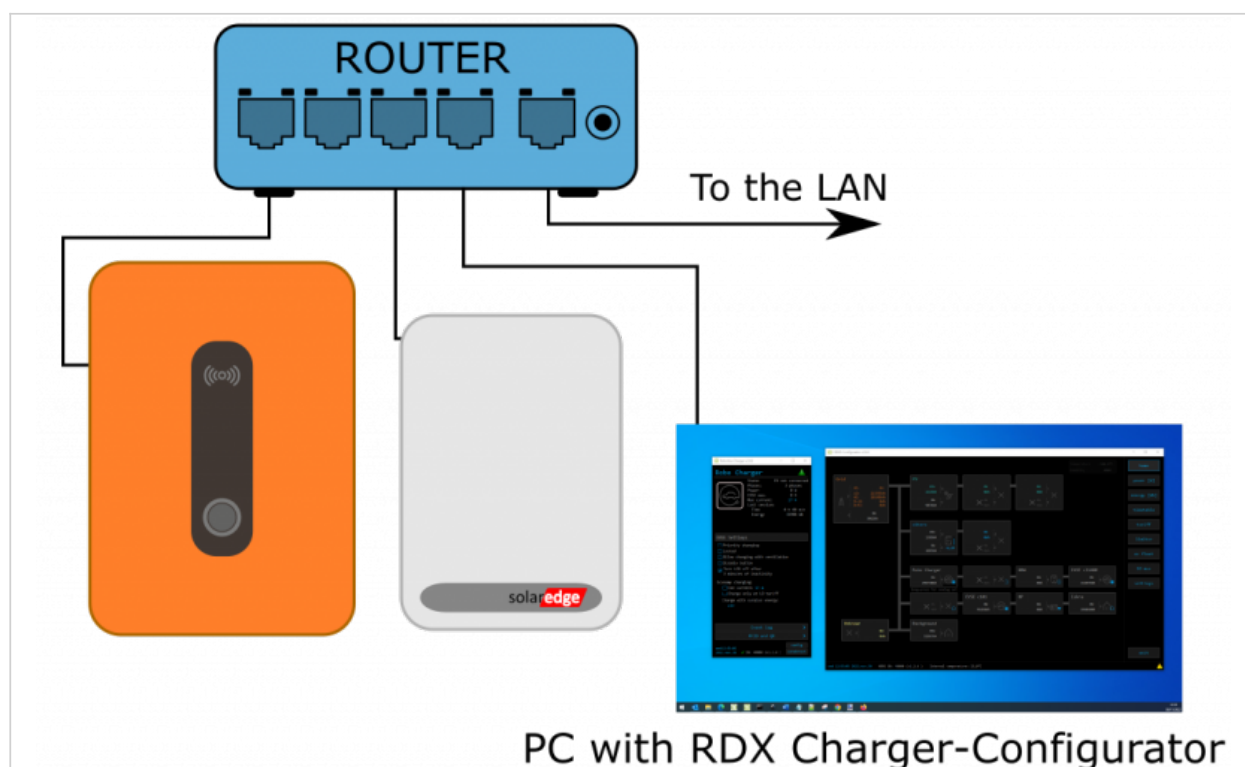
- **in:** serial (**i**nternal) with grid power sensor
- **ex:** parallel (**e**xternal) with grid power sensor

Power plants are configured as internal by default.

Obtaining data (power, voltage, etc...) from power plants is possible in two ways:





1. adding **power sensor** to measure produced electricity
2. connecting PV inverter via Modbus TCP (for SolarEdge inverters only)

EVSE and PV inverter connection



Add inverter using configurator:

- [settings](#) page → meter → select 'SolarEdge',

SOURCES	icon	source management				meter
	Grid		✓ OK	add	del	PM3-I-D
PV plant	PV plant		✓ OK	add	del	SolarEd in
	/		X /	add	del	/
	/		X /	add	del	/

- [io mux](#) page → Slave device IP address → IP address → set IP address of inverter (inverter must have static IP)

Slave device IP address		
Device	IP address	SN
	0. 0. 0. 0	?
PV plant	192.168. 88.207	?
	0. 0. 0. 0	?

Setup Modbus TCP on Inverter side using SolarEdge SetApp:

- Select Site Communication menu
 - RS485-1 → Protocol → SunSpec (Non-SE Logger)
 - RS485-1 → Device ID, enter address 1
 - Modbus TCP → Enable
 - set TCP port → 502

Note:

The TCP server idle time is 2 minutes. In order to leave the connection open, the request should be made within 2 minutes.

First, add inverter to Configurator, then setup Inverter by SetApp!