

# TGP-4D-01-IQ

## Touch HMI, Black frame



Model number:	<b>TGP-4D-01-IQ</b>
Mounting:	in-wall, fi 60 flush box

## General description

TGP-4D-01-IQ is a 4-inch graphic panel with capacitive touch, designed for Cybro/HIQ building automation systems. It features a high-resolution TFT display, internal beeper, adjustable backlight brightness, and RS485 communication.

## Features

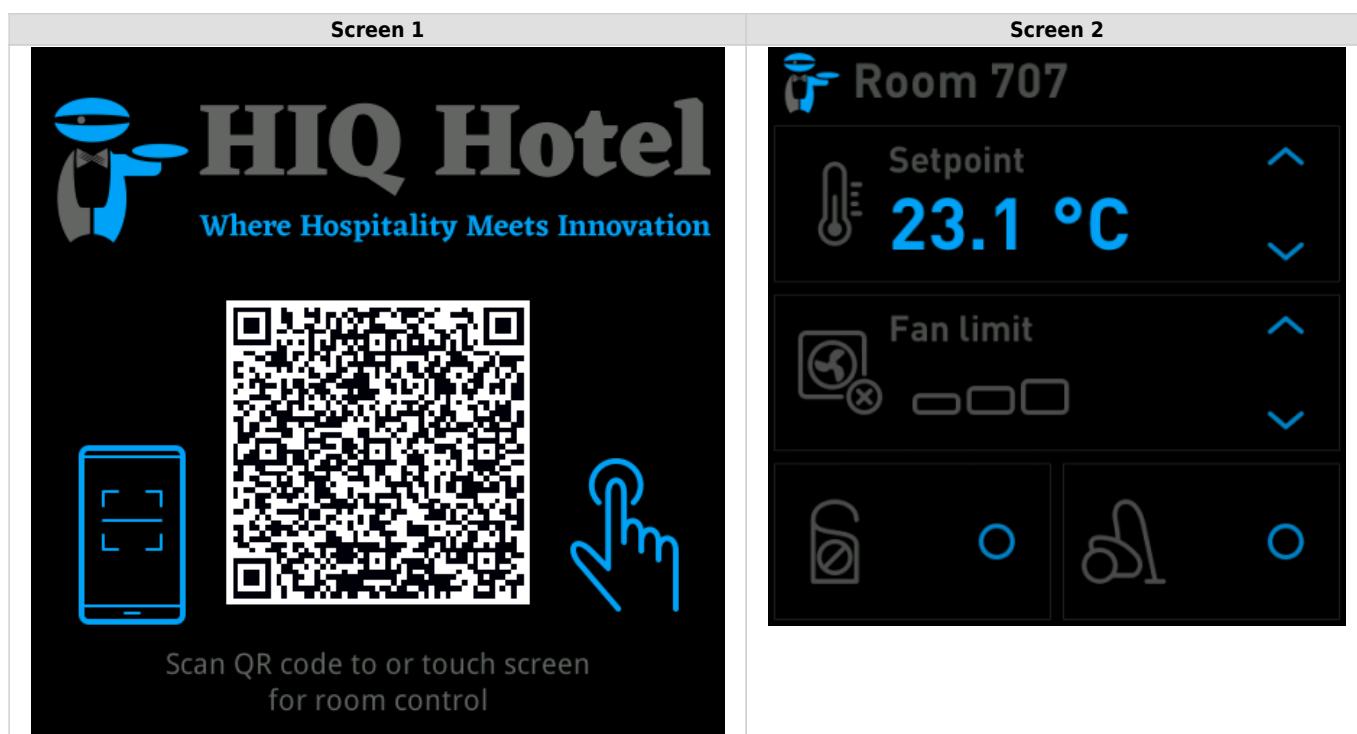
- graphic panel 4"
- capacitive touch
- internal beeper
- dimmable background
- RS485 interface
- fully configurable

## Technical specification

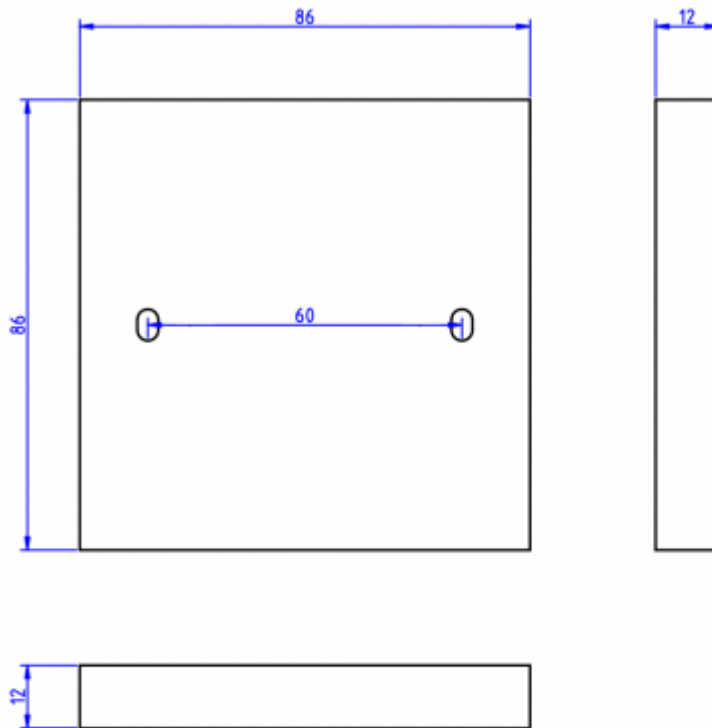
Power supply:	5-36V DC / 260 mA
Display:	TFT 4.0 inch
Resolution:	480 × 480
Brightness (cd/m <sup>2</sup> ):	250
Contrast:	800:1
Colour:	65K colour, 16-bit RGB
Active Area L x W :	71.9mm x 70.2mm
Installation :	support rotation 0°/90°/180°/270°
Touch type :	capacitive
Communication :	RS485 (to MC Controller or Cybro)
Operating temperature :	-20°C to 70°C

## Screen Overview

### Indoor Screen



## Terminals and Dimensions



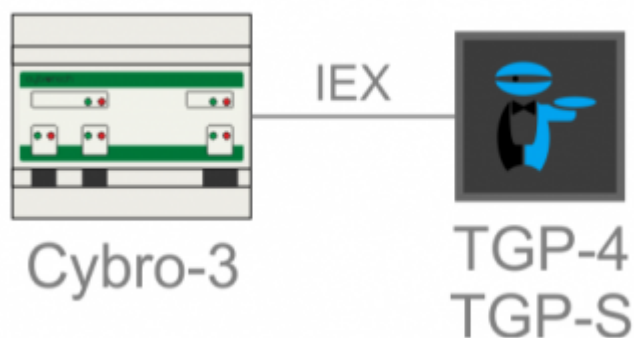
### Back side of TGP-4D-01-IQ display:

- GND
- A (RS485)
- B (RS485)
- VCC (power input)

### Connection via TGP-S adapter:

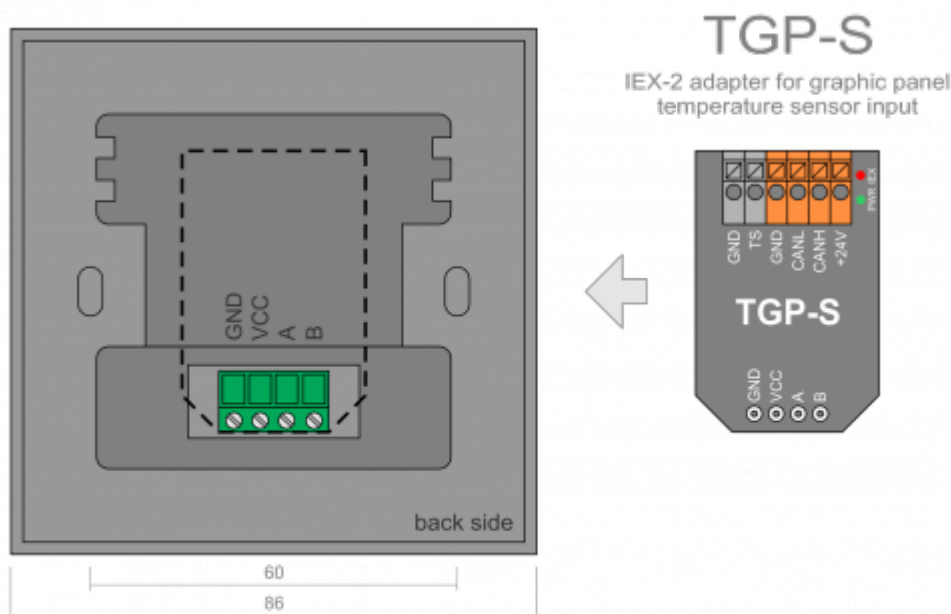
Adapter provides IEX bus (CANL/CANH), power distribution, and TS input for external temperature sensor (orange terminals)

## Connection methods



## Mounting

Exclusively flush-mounted (recessed) installation in  $\varnothing 60$  mm round flush junction box (fi 60 / circular in-wall box). Secured with two 3.5 mm screws. For basic RS485 communication and IEX-2 bus connection, the TGP-S adapter is not required - the device can connect directly to the controller. The TGP-S adapter is required only if an external temperature sensor is used (connected to the TS input on the adapter). The sensor is optional.



The display is a 4-inch TFT with an integrated touch panel. The back side has four removable terminals for power and RS485 communication. A TGP-S adapter provides connection to the IEX bus.